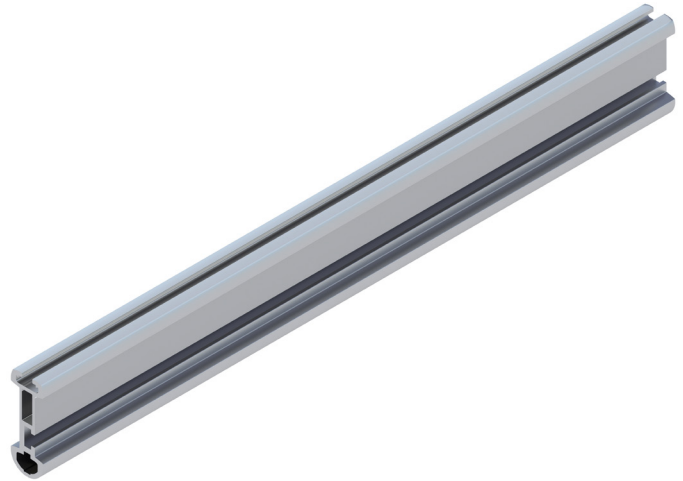


Monorail Tracks

CG20



Design Standard	EN 1808
Track Type	CG20
Dimensions	138 mm x 52 mm
Weight	6.04 kg/m
Yield Limit	160 N/mm ² 240 N/mm ²
Minimum Horizontal Bend Radius	600 mm
Minimum Vertical Bend Radius	600 mm
Typical Bracket Span	2.5 m - 3.2 m
Bracket Fastening	Top / Side
Fastening Method	2 x M16 bolts for each bracket
Material	Aluminium alloy 6063-T6 Aluminium alloy 6061-T6
Finish	Mill finish
Optional Surface Treatment	Anodized
Optional Colors	RAL 7004 RAL 9001

The CoxGomyl™ monorail is the ideal facade maintenance system for buildings with limited roof space. It can be installed with minimal visual impact respecting the architectural aesthetic. It consists of aluminium tracks in combination with the CoxGomyl trolley range and suspended platforms or as an abseil solution.

CoxGomyl's CG20 monorail tracks is the most versatile choice as it can be used with both top and side arrangements in the same installation, making it ideal also for gantries. Suitable for indoor and outdoor installations.

CoxGomyl trolleys must be used with the CG20 track.