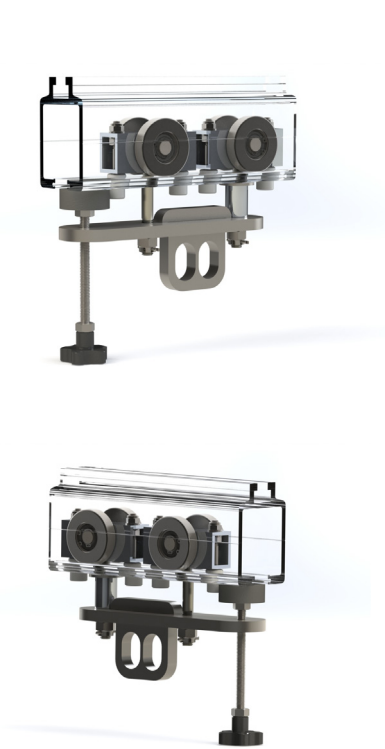


Manual Trolley

CG10MT



Design Standard	US OSHA1910.66 and ASME 120.1 standards
Track Type	CG10
Weight	8,16 lbs
Material	Aluminium 6060-T66 Stainless steel AISI 304
Bearings	Deep groove ball W
Distance Between Rollers	4,68"
Roller Diameter	Ø 2,36"
Suspension Holes Plate Length	3,00"
Suspension Holes Upper/Lower Diameter	Ø 1,06"
Trolley Length	9,84"
Trolley Width	2,36"

The CoxGomyl CG10MT is a manual trolley that works in combination with the CG10 track and can be used for indoor and outdoor applications.

The trolley is moved by pulling from the track, pushing from the facade, or moving from the ground level. The trolley is equipped with two suspension holes, one for the suspension wire and one for the safety wire. The trolley is for use with straight and curved horizontal tracks only.

Key Features

- Suitable for indoor and outdoor use
- Constructed from corrosion resistant materials
- Premium bearings for smooth operation
- Optional manual screw brake