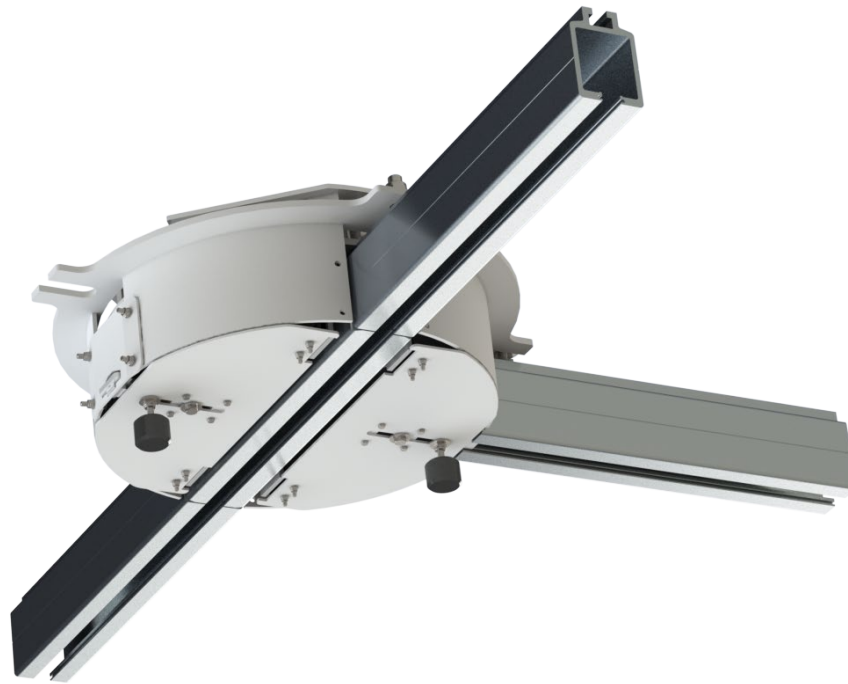


Turntable

CG10TT



Design Standard	ASME 120.1 OSHA 1910.66
Track Type	CG10
Material	Galvanized stainless steel Stainless steel AISI 304
Fixing Method	M16 bolts mild steel galvanized M16 stainless steel grade 316
Fixing Location	Under the ceiling
Finish	Mill finish
Optional Colors	RAL 7022 RAL 9010
Operation Method	Manual
Turntable Dimension	Ø 17,87"

CoxGomyl's concealed CG10 track lines can be equipped with turntables to create intersections of 3 or 4 tracks. CG10TT Turntables can change direction in a minimum of space covering a greater working area and providing more freedom during design stage.

Integrated mechanical locking devices prevent trolleys from leaving or entering the turntable section during the slewing operation. Turntables can be operated manually as standard or electrically as an option from inside the cradle.

Key Features

- Suitable for indoor and outdoor use
- Constructed from corrosion resistant materials
- Smooth track transition
- Manual or electrical operation