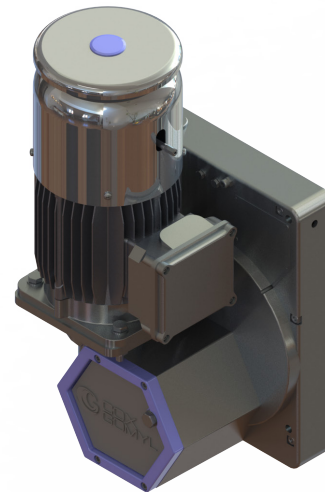
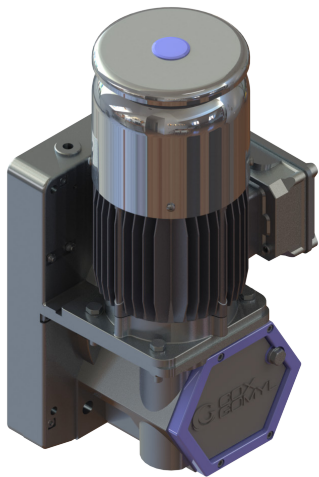


Traction Hoist



| | |
|------------------------------|-----------|
| Model | EN M508 |
| Electric Power Supply | 400 V 50/ |
| Capacity | 500 kg |
| Speed | 9 m/min |
| Power | 0.9 kw |
| Rated Current | 2.1 A |

Key Features

- Easy to maintain
- Long life cycle
- Designed for heavy duty use

Optional Features

- Low temperature kit: -25°C; + 40°C
- Traction hoist protective cover

The CoxGomyl traction hoist is specifically designed to integrate with our suspended self-powered platforms or in combination with other lifting equipment.

The traction hoist has been designed with a range of safety features to meet regulations stand the test of time, even in adverse climate conditions due to its robust and reliable design.

Standard Features

- Designed and certified according EN 1808 harmonized standard and 2006/42/EC machinery directive
- Electromagnetic motor brake
- Centrifugal brake to control manual descent speed
- Overload detection device
- No-power manual descent lever in case of emergency
- Climbing speed: 9 m/min
- Weight: 50 kg
- Operating temperature: -15°C; + 60°C
- Max. noise level: 80 dB
- Wire rope Ø8.4 mm
- IP 55