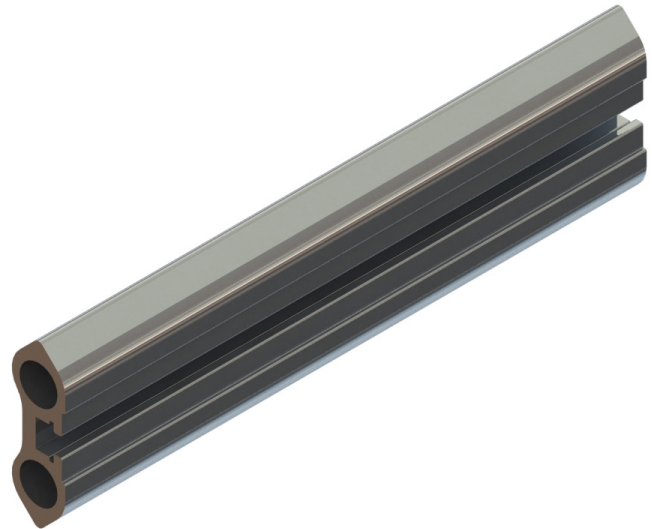


Monorail Tracks

CG30



Design Standard	EN 1808
Track Type	CG30
Dimensions	139 mm x 46 mm
Weight	7.20 kg/m
Yield Limit	215 N/mm ²
Minimum Horizontal Bend Radius	600 mm
Minimum Vertical Bend Radius	600 mm
Typical Bracket Span	2.5 m - 3.2 m
Bracket Fastening	Side
Fastening Method	2 stainless steel M16 bolts for each bracket
Material	Aluminium alloy 6063-T6
Finish	Mill finish
Optional Surface Treatment	Anodized
Optional Colors	RAL 7022 RAL 9010

CoxGomyl's monorail is the ideal facade maintenance system for buildings with limited roof space. It can be installed with minimal visual impact respecting the architectural aesthetic. It consists of aluminium tracks in combination with the CoxGomyl trolley range and suspended platforms or as an abseil solution.

CoxGomyl CG30 monorail tracks is side mounted and ideal for climbing applications. It can be used also in gantries.

CoxGomyl trolleys must be used with the CG30 track.